

Thanks for downloading my Serif Lettering worksheets for iPad & Procreate

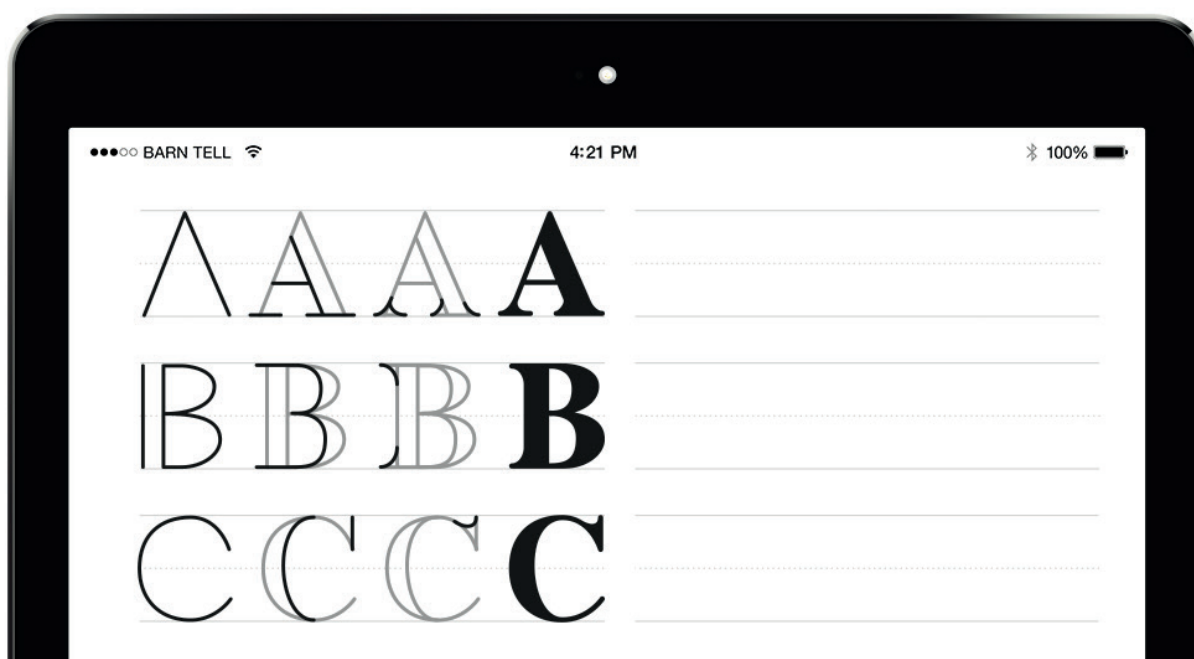
Requirements:

iPad Pro

Apple Pencil or similar stylus

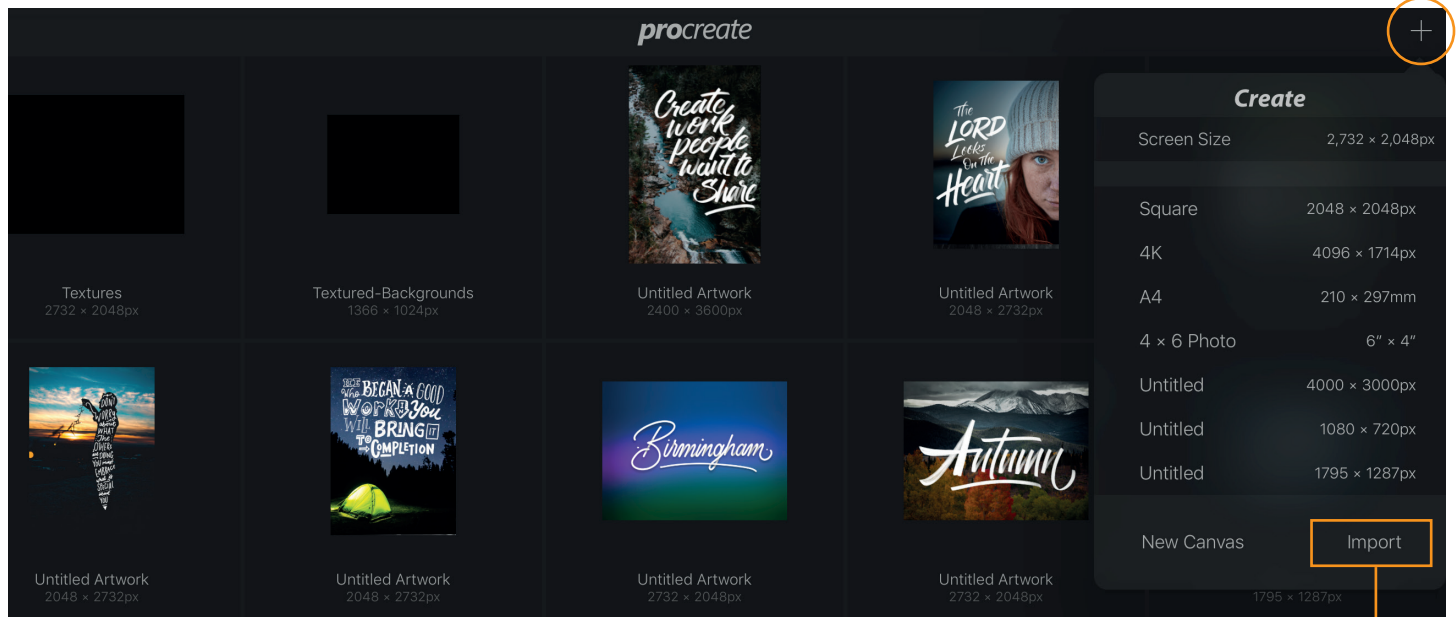
Procreate App

If you experience any problems not found within these
instructions then please to reach out to me at
hello@ianbarnard.net

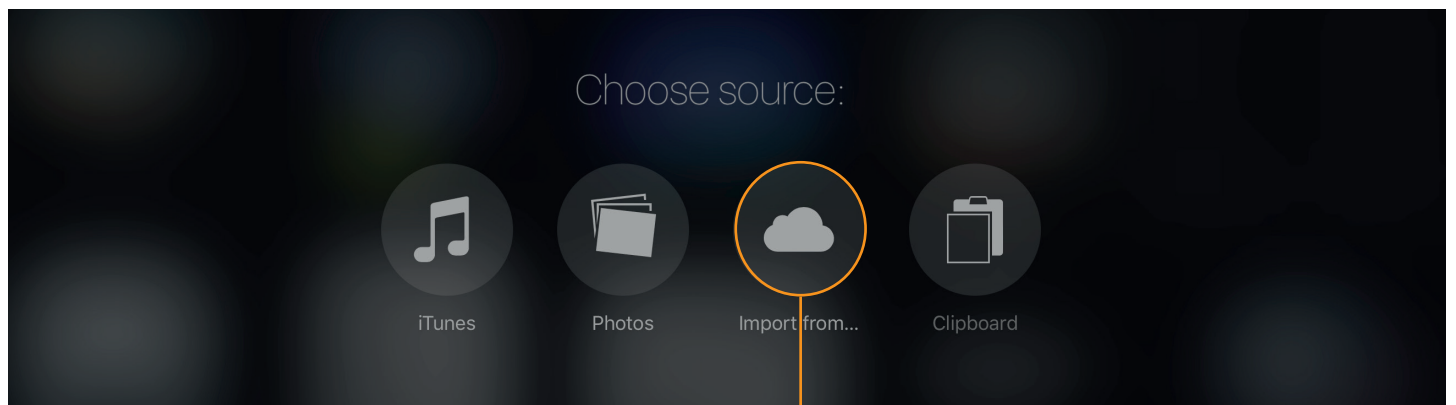


1. Opening the Worksheets

Click on the **Plus (+)** symbol, found at the top right of the screen.

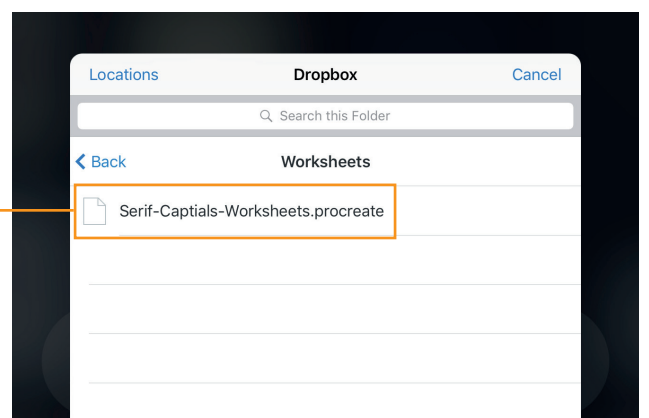


Click on the **Import** button.



Click the **Import from...** button.

Locate the worksheet you want to open first and click on it. It will then open it up.



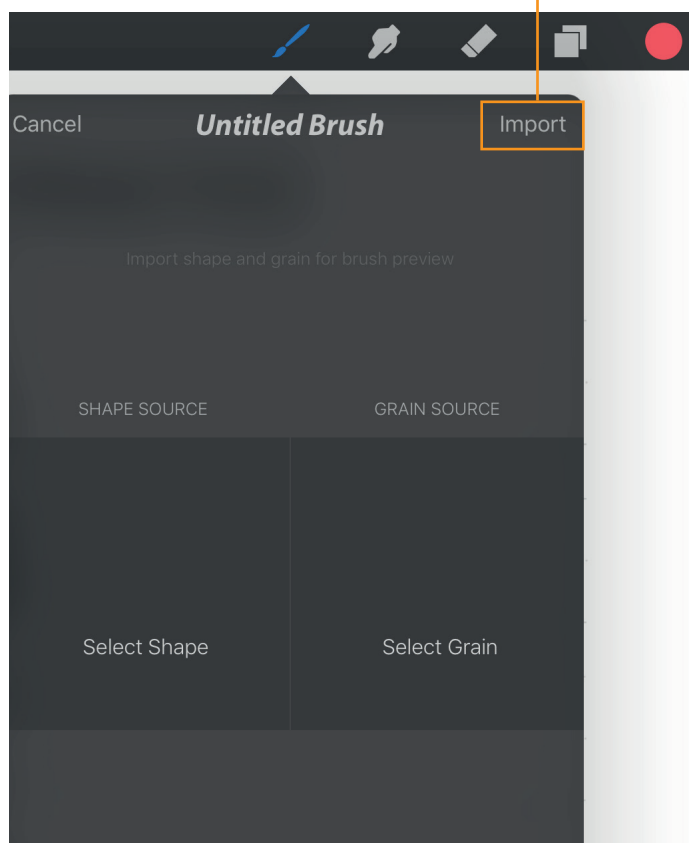
2. Installing the Brushes

Click on the **Paintbrush** symbol, found on the top menu bar.

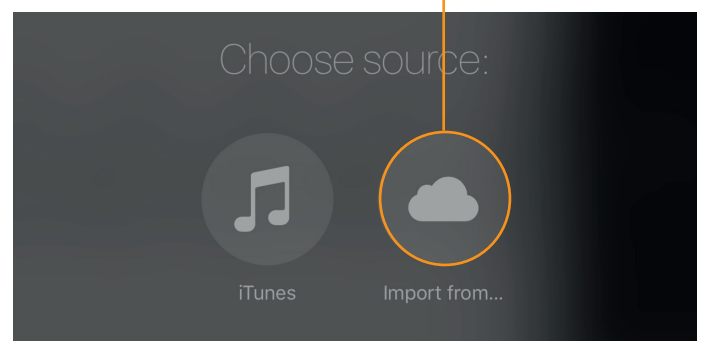


Next, click on the + icon next to the word **Brushes**.

Then click on the **Import** button



Then click on the **Import** button



Locate the **Brushes** folder and click on a brush to open.

